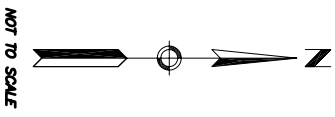
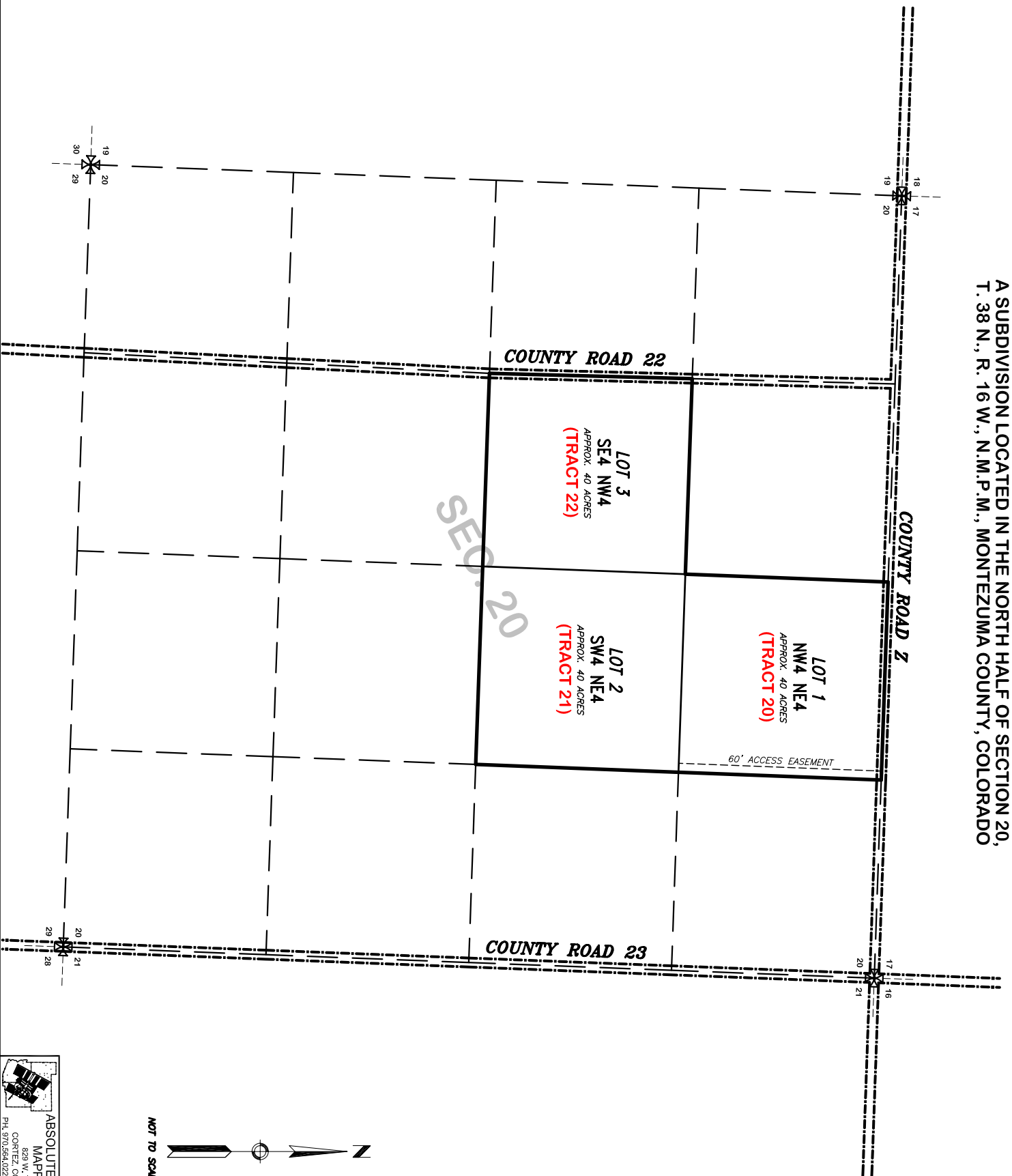


BUCKHORN

A SUBDIVISION LOCATED IN THE NORTH HALF OF SECTION 20,
T. 38 N., R. 16 W., N.M.P.M., MONTEZUMA COUNTY, COLORADO



NOT TO SCALE

**ABSOLUTE SURVEYING & MAPPING, INC.**
829 W. 7TH STREET
CORTÉZ, COLORADO 81321
PH. 970.564.0220 / FAX 970.564.1307